

Intellivision® MATTEL ELECTRONICS®

MASTERS OF THE UNIVERSE™

THE POWER OF HE-MAN™

CARTRIDGE
INSTRUCTIONS

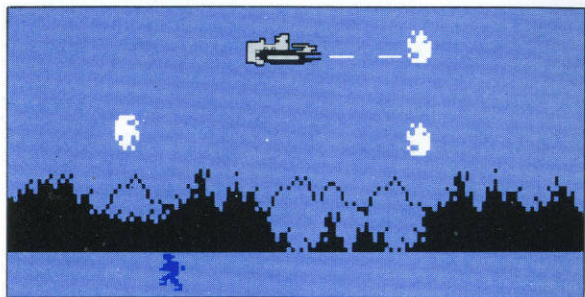
(FOR 1 PLAYER)

FOR COLOR TV
VIEWING
ONLY.



*MASTERS OF THE UNIVERSE, HE-MAN, SKELETOR, WIND
RAIDER and CASTLE GRAYSKULL are trademarks owned by and
used under license from Mattel, Inc. © Mattel, Inc. 1983.

4689-0920



THE ADVENTURE: HE-MAN™ leaps into his WIND RAIDER™ and takes off. You have 5 chances with which to fly him to the edge of the wilderness realm of SKELETOR™, 30 miles away. There is limited fuel for the perilous journey through swarms of fireballs. If your fuel runs low or you're hit by a fireball, you lose a chance. You can duck, dodge or blast away the fireballs with the bombs and cannon on board the WIND RAIDER, but if you use up all your chances the chase is over. If you make the 30 miles, HE-MAN leaps from the WIND RAIDER to continue the pursuit of SKELETOR on foot, through mountains, forests and finally CASTLE GRAYSKULL™ itself. HE-MAN must ward off the lightning-balls, power bolts and magic swords of SKELETOR, who fights for time to cast the magic cyclone spell which can carry HE-MAN away. If HE-MAN gets to SKELETOR in time, they draw their swords and duel until SKELETOR runs away to fight again...but first you have to catch him!



GETTING STARTED

■ Slide the POWER OF HE-MAN keypad overlay(s) into the Hand Controller(s).

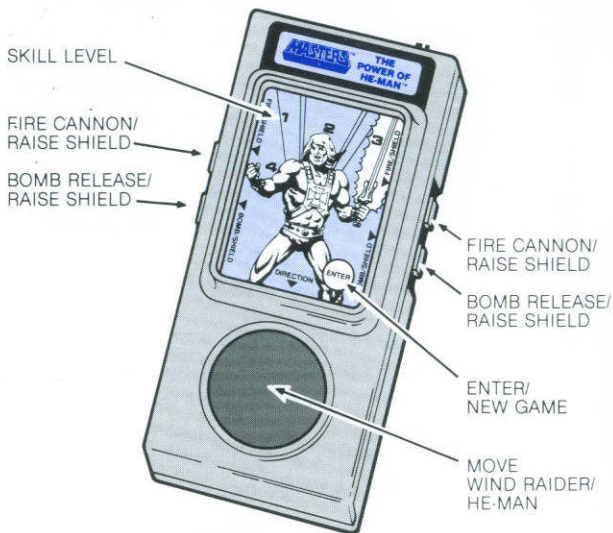
■ Insert the game in the Game Console cartridge slot. (See Owner's Manual for equipment connection details). Turn the OFF/ON switch ON. 30 seconds after the title screen comes on, a demonstration of each of the 2 phases of the game will appear, with 30 seconds between them. You'll see how fast and furious the game can get at the higher skill levels. OR —

■ Whenever you're ready, you can change to the skill level screen by pressing the disc, or any key on the controller keypad. You can now press:

- for "practice,"
- for "novice,"
- for "challenger,"
- for "master."

Then press , and the game will start immediately with PHASE 1.

THE CONTROLS

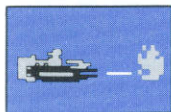


USING THE DISC

PHASE 1 — WIND RAIDER: Use the hand controller disc to move the WIND RAIDER up or down and turn it right or left, as the ground rushes by beneath it. Press the disc in the direction you want the WIND RAIDER to move. Hold the disc down and move the thumb around its edges to allow quick response to the action.

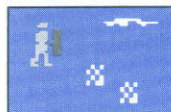
PHASE 2 — HE-MAN: Use the hand controller disc to control the direction HE-MAN runs.

USING THE SIDE ACTION BUTTONS



PHASE 1 — WIND RAIDER:

Press either upper side button to rapid-fire the cannon. The gun will continue firing as long as the button is held down. Press either lower side button to drop bombs. Just touch it for single release or hold it down for a volley.



PHASE 2 — HE-MAN: Press any side button to raise the shield of HE-MAN. Raising the shield halts HE-MAN's forward

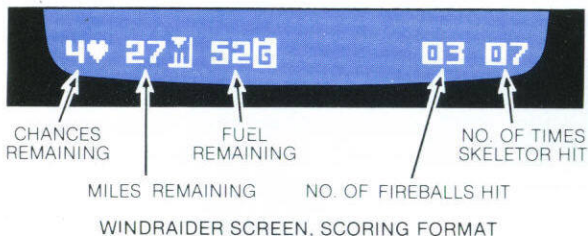
motion until the side button is released.

PHASE 1 — WIND RAIDER!™

BASIC MANEUVERING AND COMBAT STRATEGY:

Before you can rack up big scores, you must get the knack of piloting the WIND RAIDER 30 miles to the right, with as few collisions and as much fuel left as possible. Make quick left turns to zap a fireball for points, but any time spent moving left has to be made up moving right. Time equals fuel and fuel remaining equals points. Run low, and the game is over. First try a straight, low level run. Get the feel of firing the cannon and releasing the bombs. You can drop bombs on the fireballs or on the ground in front of SKELETOR, which causes him to trip into the crater.

The first time you play the game, at practice skill level, try keeping the WIND RAIDER level at the bottom of the screen. You'll probably make the 30 miles, but not likely a very high score. To go for a higher score, maneuver about the screen. Make quick turns to zap fireballs. Swoop up and down to shoot at or evade them.



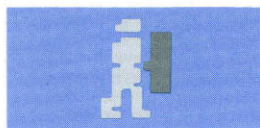
DETAILS:

- When the fuel remaining is less than the number of miles, you lose one chance and start again. Crashing into a fireball costs one chance.
- When you're within 5 miles of touchdown, the mileage display starts flashing.
- Red fireballs require 1 bullet or bomb to destroy. White fireballs take six, changing color with each successive hit.
- When the WIND RAIDER lands, the different components of your score are listed, then totalled. If you have any chances remaining, play resumes at Phase 2.

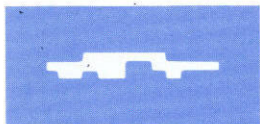
PHASE 2 — GROUND ATTACK

BASIC MANEUVERING AND COMBAT STRATEGY:

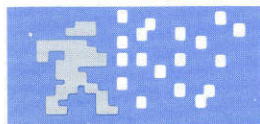
HE-MAN must catch SKELETOR 3 times — through mountains, forest and finally in CASTLE GRAYSKULL. HE-MAN maneuvers against a hail of lightning balls and power-bolts hurled by SKELETOR. If you fail to raise his shield in time, each hit pushes him back. THERE IS A TIME LIMIT in which to get across all 3 screens. It's 90 seconds at the lowest skill level and 120 seconds on the more advanced levels. A warning horn sounds the last 10 seconds. If you don't get HE-MAN across in time, he's carried off in the magic cyclone spell of SKELETOR. When you make it across a screen, HE-MAN duels with SKELETOR and chases him into the next screen. At the higher skill levels the shield is less effective and maneuvering becomes more important. If you make it through all 3 ground screens, HE-MAN leaps back into the WIND RAIDER and takes off again. The chase begins anew at a higher skill level.



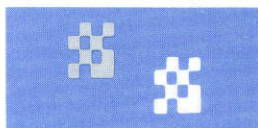
HE-MAN WITH SHIELD UP



POWER BOLT



HE-MAN CAUGHT IN SPELL



LIGHTNING BALL



MAGIC SWORD

GROUND SCREEN ACTION FIGURES

DETAILS:

■ On the ground screens, seconds remaining tick off at the lower left. The score appears at lower right. Above that is the number of chances remaining.

■ You earn a 10,000 point bonus for crossing a screen without raising the shield.

■ To buy more time, go after the magic swords. You gain at least 5 extra seconds. The number increases with the skill level. Valuable bonus

points are scored for each magic sword taken by HE-MAN.




■ Red lightning-balls can knock you all the way back.

■ Purple lightning-balls and green power-bolts temporarily destroy your shield.

■ You may have to reverse course quickly if you can't raise the shield in time. As you gain more skill, the options will increase.

POINT VALUES

WIND RAIDER SCREEN:

	DESCRIPTION	POINTS
	Fireball shot down or bombed	500
	SKELETOR falls in crater	1000
	Each gallon of fuel remaining when WIND RAIDER lands	1000

GROUND SCREENS:

	DESCRIPTION	MOUNTAIN SCREEN	FOREST SCREEN	CASTLE GRAYSKULL SCREEN
	Lightning-ball or power-bolt hits shield	50	50	50
	HE-MAN reaches SKELETOR	10,000	15,000	20,000
	Magic sword	1,000	1,500	2,000

BONUSES: EXTRA CHANCES, TIME AND POINTS:

- Each 100,000 points you score, HE-MAN gets another chance.
- Catching the drifting magic sword is worth 5 extra seconds at the lowest skill level, more at higher skill levels.
- If you cross any screen without raising the shield, it's worth a 10,000 point bonus.
- You get 200 bonus points for each second remaining after crossing the Castle Screen. The time bonus increases to 400 points per second at higher skill levels.

SOME TIPS

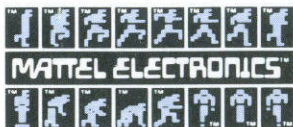
MASTERS OF THE UNIVERSE™* THE POWER OF HE-MAN™* is an action packed, fast-paced game which requires practice and patience. Start slow and try to keep the action going as long as possible. Avoid spending time and fuel on fancy maneuvering, at least until the basic moves — firing, bombing, turning, shield-raising, broken-field running and other evasions — become more natural and rapid, as they will with practice. To get an idea of what it's possible for YOU to do, be sure to watch the demonstrations which follow the title screen.

VARIATIONS

You can play alone, or 2 can alternate and compare scores. It's also fun for 2 to use both controllers at the same time, either working together or dividing up the battle tasks. In any case, the name of the game is "HAVE FUN!"

Intellivision®

Mattel Electronics®



Other electronic games
available from Mattel Electronics.
Look for them!